

Transesophageal Echocardiography (TEE) Probe Process Improvement Project Extending Storage Time

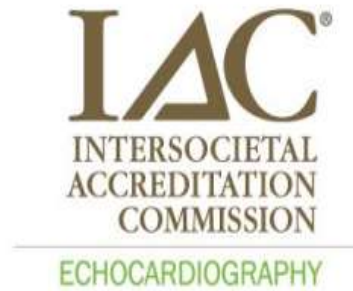
October 11, 2023

SDIC APIC

Emily Barnard, MPH, CIC



TEE Probe Standards and Guidelines



IAC Standards and Guidelines for Adult Echocardiography Accreditation



Process Improvement



Stakeholder Analysis

Stakeholders



iZenBridge

Stakeholder Analysis

Stakeholder Analysis is the process of understanding who has a vested interest in a change effort and working with them to ensure success.

Who has a vested interest in this project?

Would they be supportive?

What's in it for them?

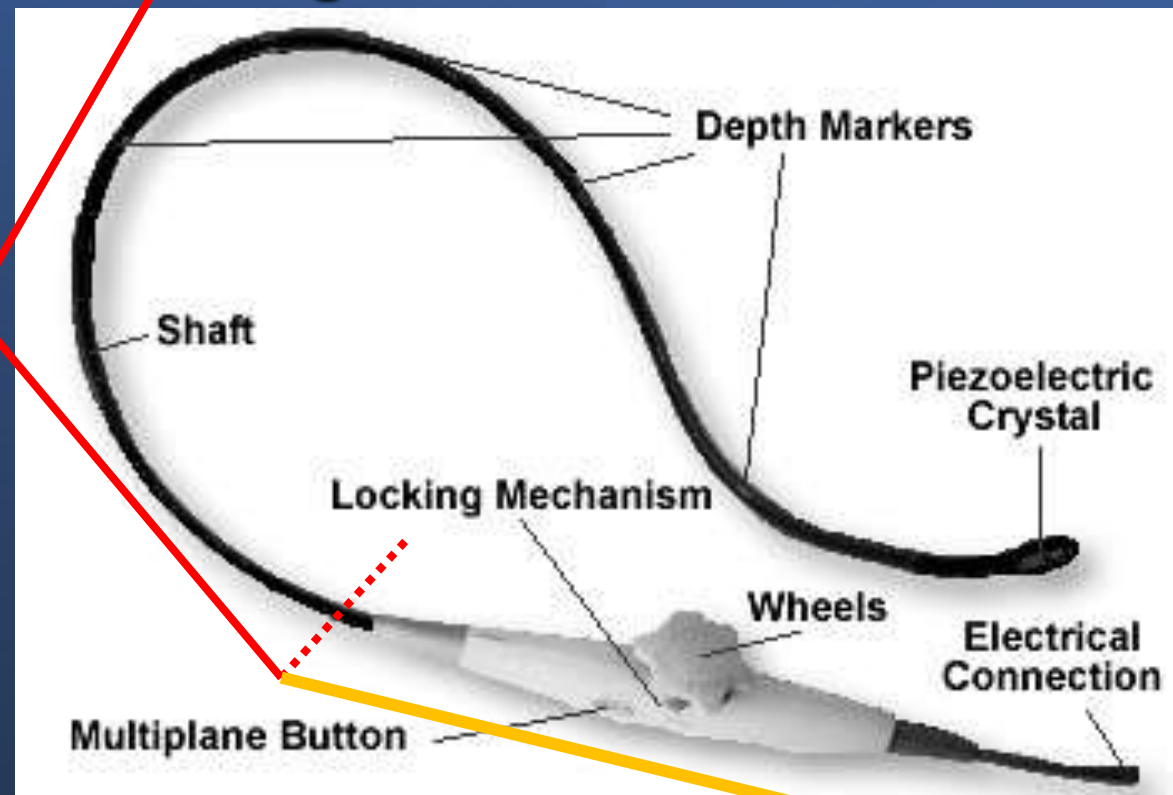
How should we stay connected?



What is a TEE?



High-level disinfection



Low-level disinfection



**FLEXIBLE ENDOSCOPE
 BEDSIDE PRE-CLEAN KIT**

Point-of-Use Treatment



**KEEP
CALM
AND
KEEP IT
MOIST**



**KEEP
CALM
AND
KEEP IT
DRY**

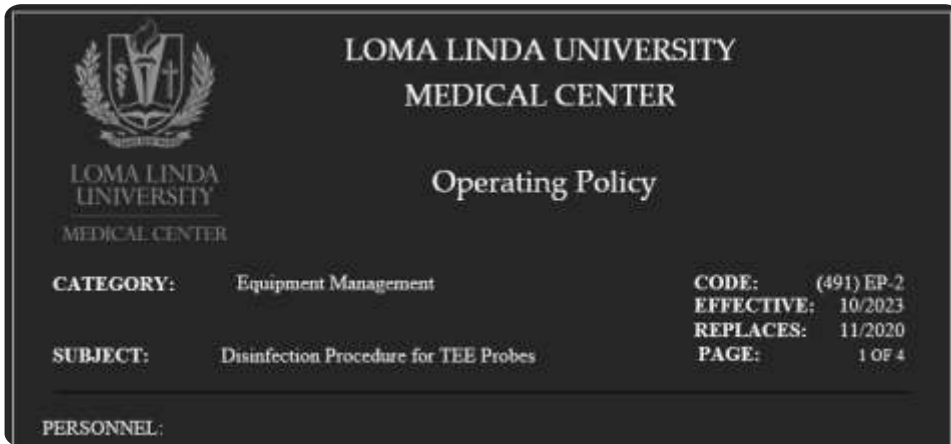
Policy Review

- Considerations During Review:

Purpose, Definitions,
Procedure Method, Key points

- Who is responsible?
- Where should the work take place?
- How should the work be performed?
- What is the action frequency?
- What are the related policies?

- Departmental or House-Wide policy?
- Expectations vs Clinical Skills?



LOMA LINDA UNIVERSITY
MEDICAL CENTER

LOMA LINDA
UNIVERSITY
MEDICAL CENTER

Operating Policy

CATEGORY:	Equipment Management	CODE:	(491) EP-2
		EFFECTIVE:	10/2023
		REPLACES:	11/2020
SUBJECT:	Disinfection Procedure for TEE Probes	PAGE:	1 OF 4

PERSONNEL:



Storage Guidance

MIFU for Philips and Siemens combined

- Store in well ventilated area
- Store with the handle and connector above the flexible shaft
- Keep the tip straight, in the unlocked position and ensure the cable and flexible shaft are free of kinks.
- Store the transducer in a clean, dry, protected environment.

aium

- Transducers need to be stored in accordance with their disinfection level.

IAC

- Space permitted for storage of records and supplies must be sufficient for the patient volume of the facility.

thank
you

